

G-COMIN

Innovative LED light Manufacturer



FOOD PROCESSING LIGHT

Ideal for food processing factory, pharmaceutical factory, cosmetics, plant, dust-free plant, winery, supermarket etc.



RoHS

● Specifications



WATTAGE	30/50/80/100/150/200/240W
LAMP LUMINOUS FLUX	165LM/W±5%
CRI	Ra>70/80
CCT	2700-6500K
RATED VOLTAGE	AC 100-240V 277V~, 50/60Hz
POWER FACTOR	>0.95
BEAM ANGLE	60°/90°/120°
IP GRADE	IP69K
OPERATING TEMP	-40℃~55℃

CO-HALO-F30W

4,950LM±5%
3.2kg±5%
φ380x63mm

CO-HALO-F50W

8,250LM±5%
3.2kg±5%
φ380x63mm

CO-HALO-F80W

13,200LM±5%
3.6kg±5%
φ380x63mm

CO-HALO-F100W

16,500LM±5%
3.8kg±5%
φ380x63mm

CO-HALO-F150W

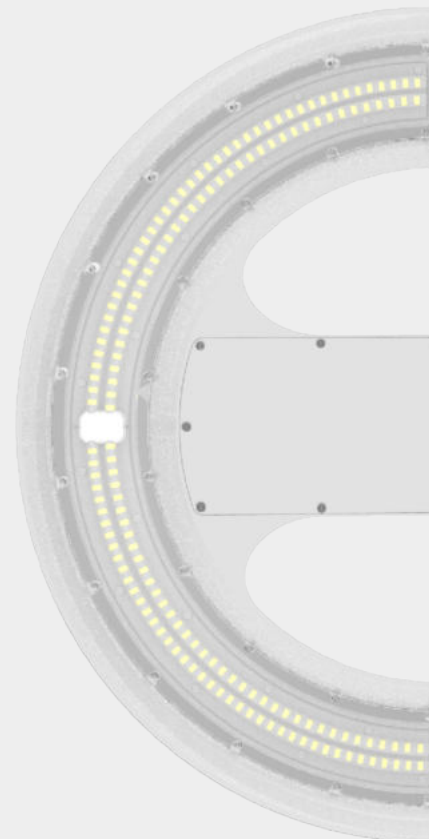
24,750LM±5%
3.8kg±5%
φ380x63mm

CO-HALO-F200W

33,000LM±5%
5.6kg±5%
φ500x68mm

CO-HALO-F240W

39,600LM±5%
5.6kg±5%
φ500x68mm



- Product Feature

All for your health!

Halo series LED highbay are developed to meet the needs of the food processing and pharmaceutical industries.



IP69K

- ▶ High pressure water resistant
- ▶ Steam resistant

- ▶ Biocompatible materials



● Installation



➤ Ceiling installation

➤ Suspension installation



● Application

Highly safety material make Halo-F series high bay perfect option for the pharmaceutical industry, food processing industry with strict production requirements.



● Testing

➤ Salt Spray Test



The heat sink processed by powder spraying so that it has good corrosion resistance.

➤ UV Aging Test



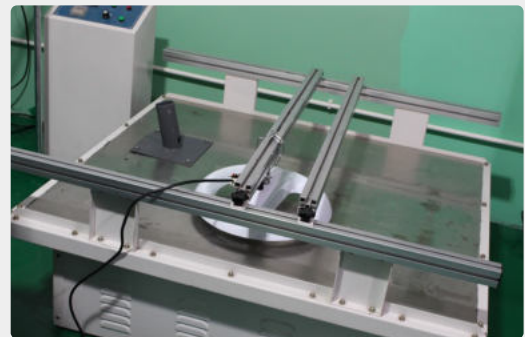
The test time is about 720 hours. After test the lamp working regularly, no discoloration appearance, no yellowing of the PC lens.

➤ High-Low Temperature Test



The test equipment opening 4hours, keeping temperature $< -40^{\circ}\text{C}$ the lamp working fine. The test equipment opening 4hours keeping temperature $> 60^{\circ}\text{C}$, the lamp keep working fine.

➤ Vibration Test



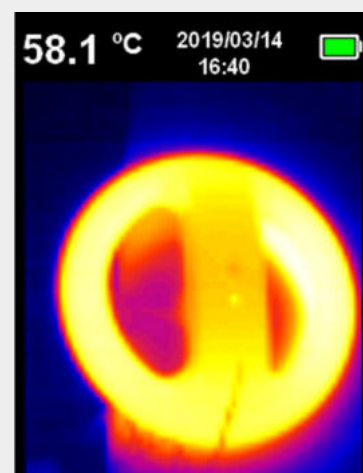
Vibration test is a simulation of various vibration condition including transportation, installation and using, to ensure system robustness.

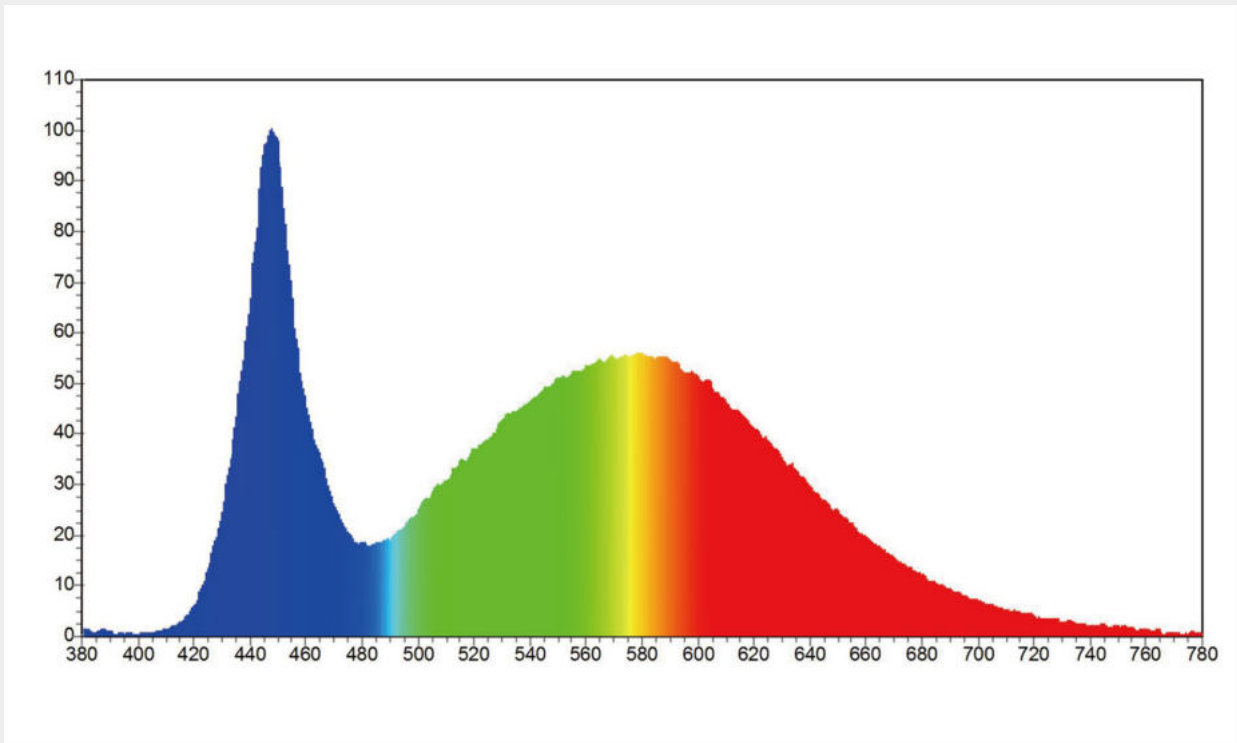
➤ Withstand Voltage Test



Testing whether the withstand voltage is within the specified value, to avoid sudden voltage surges such as short circuit, operation error, fault, etc, causing breakdown or accidents.

➤ Temperature Rise Test





Spectrum Parameters				
x: 0.3393	y: 0.3504	R1: 80.1	R2: 84.8	R3: 85.7
u: 0.2080	v: 0.3221	R4: 80.1	R5: 80.1	R6: 76.1
WD: 566.5 nm	WP: 447.5nm	R7: 81.8	R8: 67.3	R9: 7.1
HW: 23.0 nm	Purity: 0.069	R10: 60.8	R11: 78.2	R12: 58.8
CCT: 5224 K	Ra: 79.5	R13: 80.0	R14: 91.6	R15: 77.8
DUV: 0.0018		R%: 26.9	G%: 43.1	B%: 30.0
Kred 18.71%	Kgreen 76.09%	Kblue 5.20%		
Electrical				
Flux: 33242.298 lm		P: 165.797 lm/w		P: 4247.19 mw
I: 906.4 mA	V: 221.20 V	P: 200.5 w		PF: 0.9650

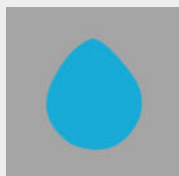
● Light Distribution

There are three angles to choose:

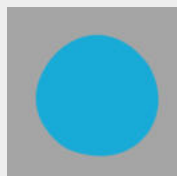
60°/90°/120°available



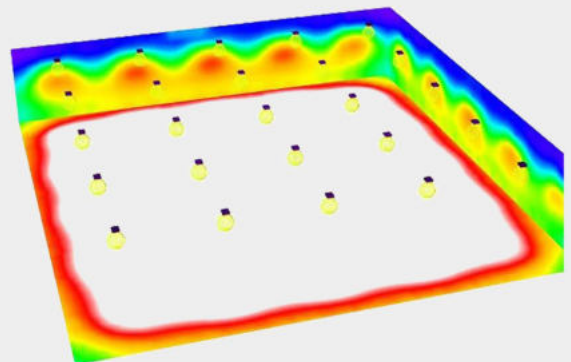
60°



90°

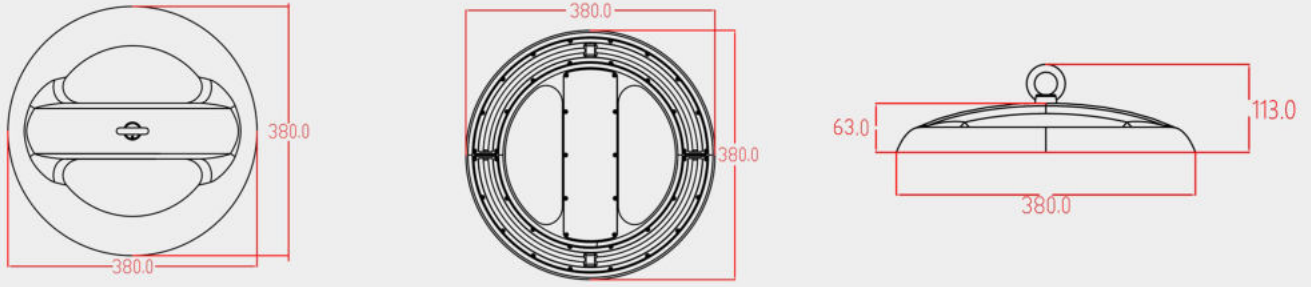


120°



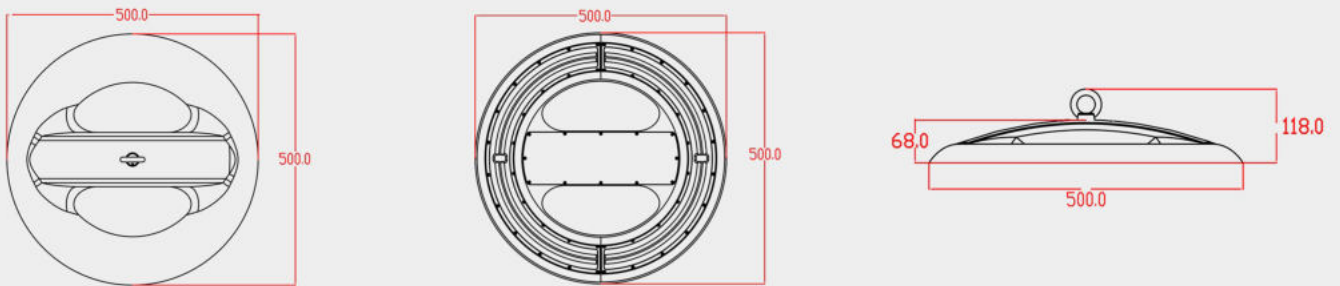
● Package

Type A: 380mm series



Model	Size of Box	Cross Weight	Size of Carton	Cross Weight	Box Quantity /Carton
CO-HALO-F30W	44*43*19cm	5.5KG±5%	45*45*77cm	21.0KG±5%	4
CO-HALO-F50W	44*43*19cm	5.5KG±5%	45*45*77cm	21.0KG±5%	4
CO-HALO-F80W	44*43*19cm	5.7KG±5%	45*45*77cm	22.5KG±5%	4
CO-HALO-F100W	44*43*19cm	6.0KG±5%	45*45*77cm	23.2KG±5%	4
CO-HALO-F150W	44*43*19cm	6.2KG±5%	45*45*77cm	23.5KG±5%	4

Type B: 500mm series



Model	Size of Box	Cross Weight	Size of Carton	Cross Weight	Box Quantity /Carton
CO-HALO-F200W	57*57*20cm	8.8KG±5%	58*58*42cm	17.4KG±5%	2
CO-HALO-F240W	57*57*20cm	8.8KG±5%	58*58*42cm	18.1KG±5%	2

